

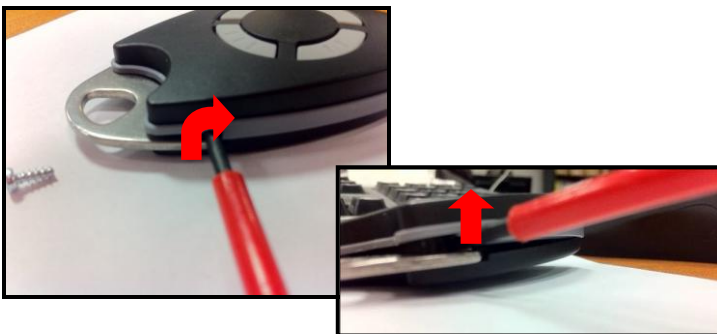
BI-TECHNOLOGY REMOTE BATTERY CHANGING GUIDE 09-0102 à 09-0106 (HTEL-2)

A) UNSCREW THE 3 SCREWS



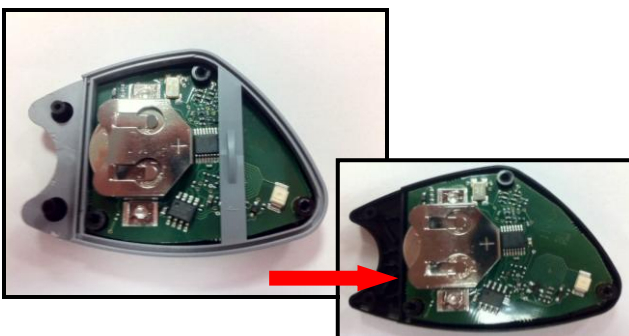
Unscrew the 3 screws on the back side off the remote with an adapted screwdriver.

B) OPEN THE REMOTE BOX



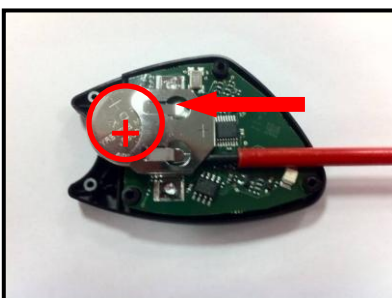
- Introduce a flat screwdriver or a thin metallic part (cutter blade for exemple) between the stainless steel ring and the gray seal.
- Use a flat screwdriver as a lever to release the clips

C) TAKE OFF THE GRAY SEAL



- Take off the gray part to free the battery access.

D) TAKE OFF AND REPLACE THE BATTERY



- Push the Battery off its housing.
- Put the new one (Warning with battery type CR2032 and side position)
- The red LED might flash 3 times when you press any button.